

ABOUT THIS TEMPLATE

Use Small, Medium, and Large graph papers in this workbook for graphing equations, drawing charts, or plotting layouts. You can also print and use these graph papers.

Add data to each sheet.

Note:

Additional instructions have been provided in cell A1 of each worksheet in GRAPH PAPER workbook. This text has been intentionally hidden. To remove text, select cell A1, then select DELETE. To unhide text, select cell A1, then change font color.

The material in this document is a knowledge-sharing tool provided by the FSR team to enhance compliance with Facility Site Review requirements. All content is for informational purposes and may be used and/or modified according to site-specific practices. Ensure appropriate review and approval by site management prior to adoption.

Feb-20

Emergency Evacuation Route

Learn about elements of a good emergency evacuation floor plan by moving your mouse over the items listed below.

Designate Primary & Secondary Exits

Your evacuation floor plan should designate at least one primary exit and one secondary exit. These exits must be remote from each other and so arranged as to minimize any possibility that both may be blocked by any one fire or other emergency condition.

No Emergency Exits in Restrooms

Even if there is a door in a restroom that employees could exit out of, no emergency exits are designated through restrooms for evacuation of a building. Windows are never designated as exits. Consequently, the floor plan does not indicate the restroom as an exit.

Exit Away From Rooms With Hazardous Materials

Emergency exit routes lead away from this room containing potentially hazardous materials so that no employee will be forced to pass the area during an emergency.

No Emergency Exits Into Narrow Passages

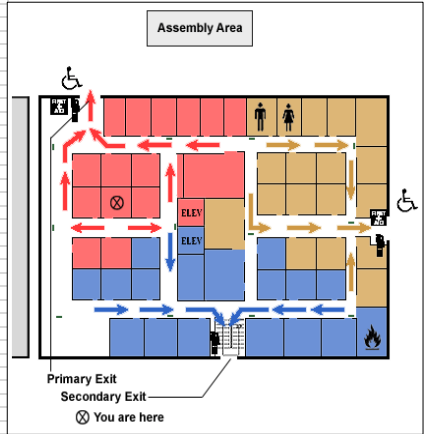
This short passageway between the two buildings may not provide enough open space for safe evacuation during an emergency. Accordingly, no emergency exit leads to this narrow space.

Exit Signs Indicating the Nearest Emergency Exit

Signs reading "Exit" with an arrow indicating the directions, must be placed in every location where the direction of travel to reach the nearest exit is not immediately apparent.

Designate An Assembly Area

An assembly location should be designated outside the building for employees to gather during an emergency. The location of **EXAMPLE:**



https://www.osha.gov/SLTC/etools/evacuation/floorplan_demo.html



Copy, change size, or colors as needed



Additional Shapes Use Function:

