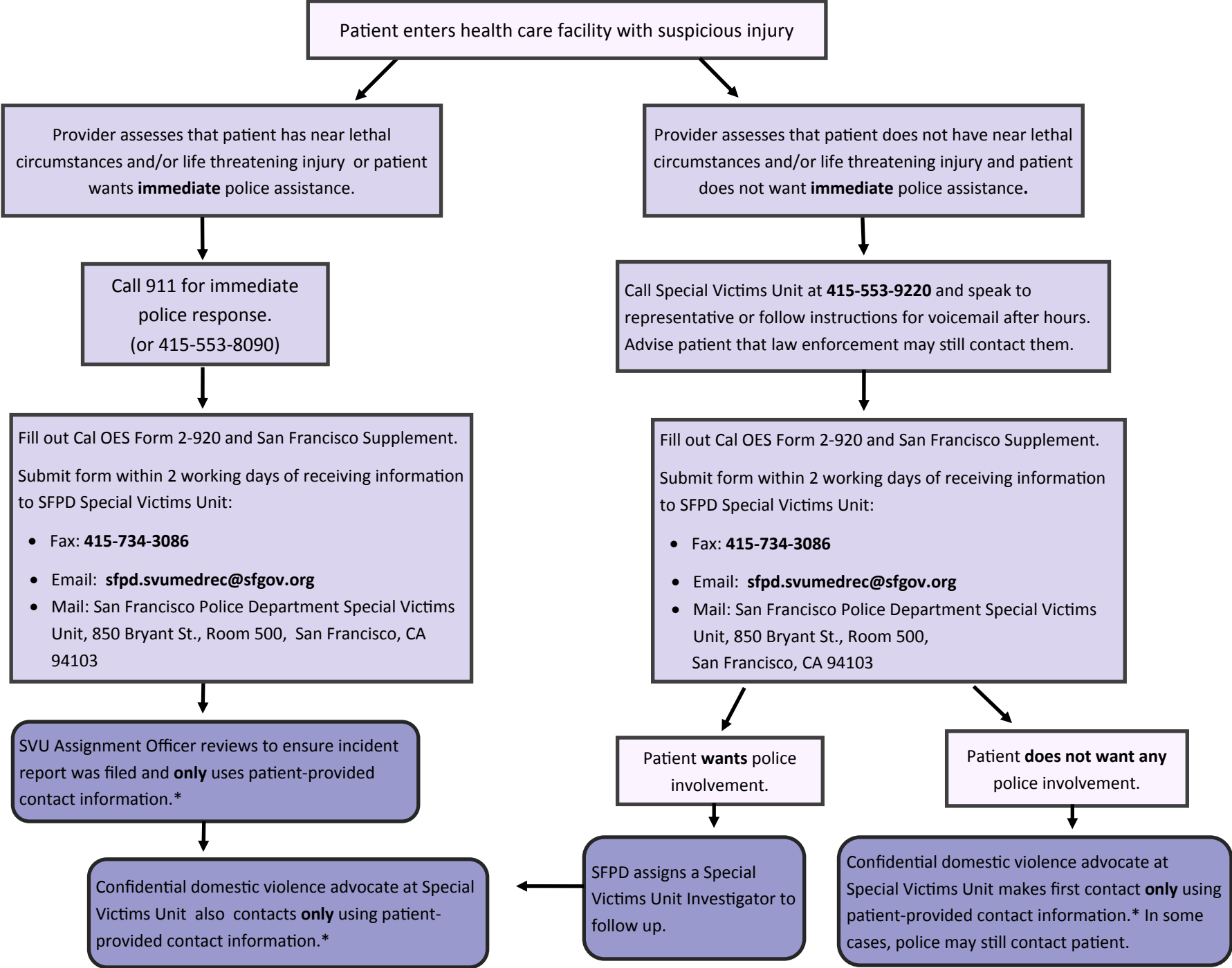


# San Francisco Health Care Provider Reports of Suspicious Injury to Law Enforcement Flowchart



\*See San Francisco Supplement to Health Practitioner Suspicious Injury Report

There are 2 steps to reporting a suspicious injury to law enforcement:

1. You must call the police.
2. You must make a written report.

### The Call:

When making the call in San Francisco, you have two options:

1. Call 911 (or 415-553-8090) for immediate response:
  - if the patient has near lethal circumstances and/or life threatening injury; or
  - patient wants immediate police assistance.
2. Call the San Francisco Police Department Special Victims Unit at 415-553-9220 if neither of the above.



### The Written Report:

Complete both the Cal OES Form 2-920 and San Francisco Supplement, and send to Special Victims Unit by fax, e-mail or snail mail.

## Information You Will Be Asked by 911 Dispatcher

Is suspect at the hospital with the victim?

What is the location of the occurrence?

Victim's name

Victim medical status (if critical)